

Kos Air

IT

Sedute ispirate ai valori dell'accoglienza e della comodità, per aree di attesa e ricevimento

EN

Seating inspired by the values of hospitality and comfort which are ideal for waiting and reception areas.

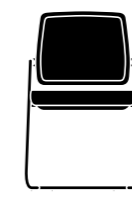
FR

Sièges inspirés des valeurs de l'hospitalité et du confort, idéaux pour les zones d'attente et de réception.

ES

Sillas inspiradas en los valores de la acogida y el confort, ideales para zonas de espera y recepción.

**Kos Air/
Kos Air black**



01



02



03



04

Kos Air

IT

Kos Air è una poltroncina ospiti per ambienti operativi, spazi di attesa o riunione. In versione a slitta, quattro gambe, base girevole fissa e base con ruote, soddisfa differenti esigenze funzionali ed estetiche. È proposta con schienale in rete, in colore nero o bianco, e struttura in tubolare cromo o verniciata nera.

EN

Kos Air is a guest chair for working environments, waiting or meeting areas. Available in sled, four-leg, fixed swivel or castor base versions, it fulfils a wide range of functional and aesthetic requirements. Available with a black or white mesh backrest and chrome or painted black tubular structure.

FR

Kos Air est un fauteuil d'invité pour les environnements de travail, les espaces d'attente ou de réunion. En version traîneau, quatre pieds, base fixe pivotante et base à roulettes, il répond à de différentes exigences fonctionnelles et esthétiques. Il est proposé avec un dossier en maille, en noir ou en blanc, et une structure tubulaire chromée ou peinte en noir.

ES

Kos Air es un sillón de invitados para ambientes de trabajo, espacios de espera o reuniones. En versiones de corredera, de cuatro patas, base giratoria fija y con ruedas, satisface distintos requisitos funcionales y estéticos. Está disponible con respaldo de malla, en blanco o negro, y estructura tubular cromada o pintada de negro.



KOS AIR 03



KOS AIR 04-01-02

IT

La versione in colore bianco trasforma completamente la poltroncina, variandone l'impatto formale e il rapporto con l'ambiente circostante. L'abbinamento con la struttura cromata alleggerisce le forme e amplia le possibilità di impiego dei rivestimenti a catalogo.

EN

The white version completely transforms the armchair, changing its formal impact and how it engages with its surroundings. The combination with the chrome-plated structure lightens the shapes and expands the possibilities of use offered by the upholstery catalogue.

FR

La version blanche transforme complètement le fauteuil, en variant son impact formel et son rapport avec la zone environnante. La combinaison avec la structure chromée allège les formes et elle élargit les possibilités d'utilisation des revêtements du catalogue.

ES

La versión en blanco transforma por completo el sillón, cambiando su impacto formal y su relación con el entorno. La combinación con la estructura cromada aligera las formas y amplía las posibilidades de uso de los revestimientos del catálogo.



KOS WHITE AIR 02



KOS WHITE AIR 01



KOS WHITE AIR 03-04

IT

La pulizia formale dello schienale determina un piacevole effetto visivo del retro valorizzandone le proporzioni. La disposizione intorno ad un tavolo riunioni diventa gradevole e ordinata e rende naturale e sempre pertinente l'inserimento in contesti diversi.

EN

The clean form of the backrest achieves a pleasant visual effect by emphasising proportions. The layout surrounding a conference table becomes visually appealing and well-organised, making it a natural and always meaningful addition to a variety of contexts.

FR

La netteté formelle du dossier détermine un effet visuel agréable de l'arrière en mettant en valeur ses proportions. La disposition autour d'une table de réunion devient agréable et épurée et elle rend son introduction toujours naturelle et pertinente dans des contextes différents.

ES

La pureza formal del respaldo crea un agradable efecto visual al realzar sus proporciones. La disposición en torno a una mesa de reuniones se vuelve agradable y ordenada, y hace que encaje de forma natural y siempre acorde en diferentes contextos.

Kos Air



DESCRIZIONE - description - description - descripción

IT

Kos Air è una collezione di sedute per ospiti e attesa. È costituita da uno schienale in poliammide e rete autoportante ignifuga entrambi in colore nero. Il sedile è realizzato in polipropilene nero con struttura interna in multistrati di legno. Sono collegati reciprocamente da una struttura in tubolare di acciaio con pad in polipropilene che costituisce il bracciolo. La base è proposta in quattro versioni: a slitta, a quattro gambe, quattro gambe piramidale e girevole a cinque razze in pressofusione di alluminio con ruote piroettanti frenate. I tubolari in acciaio sono proposti in finitura lucida o verniciata nera con piedini in polipropilene.

EN

Kos Air is a collection of guest and waiting chairs. It consists of a polyamide backrest and fire retardant self-supporting mesh, both in black. The seat is made of black polypropylene with an inner structure of multi-layer wood. They are connected to each other by a tubular steel frame with a polypropylene pad that forms the armrest. The base is offered in four versions: cantilever, four-leg base, four-star pyramid base and five-star swivel base in die-cast aluminium with braked swivel castors. The steel tubulars are offered in a chromed or black painted finish with polypropylene feet.

FR

Kos Air est une collection de chaises d'accueil et d'attente. Elle se compose d'un dossier en polyamide et d'une résille autoportante ignifugée, tous deux de couleur noire. L'assise est en polypropylène noir avec une structure tubulaire en acier avec un coussin en polypropylène qui forme l'accoudoir. Le piètement est proposé en quatre versions: piètement-luge, piètement à quatre pieds, piètement pyramidal à quatre pieds et piètement pivotant à cinq branches en aluminium moulé sous pression poli avec roulettes pivotantes freinées. Les tubes en acier sont proposés en finition chromée ou peinte en noir, avec des pieds en polypropylène.

ES

Kos Air es una colección de sillas de espera y de huéspedes. Consta de respaldo de poliamida y red autoportante ignifuga, ambos en color negro. El asiento es de polipropileno negro con estructura interior de madera multicapa. Están unidos entre sí por un bastidor tubular de acero con una almohadilla de polipropileno que forma el reposabrazos. La base se ofrece en cuatro versiones: cantilever, base de cuatro patas, piramidal de cuatro patas y base giratoria de cinco radios de aluminio fundido a presión con ruedas giratorias con freno. Los tubulares de acero se ofrecen en acabado cromado o pintado de negro con patas de polipropileno.

CERTIFICAZIONI E OMOLOGHE - certification and homologues - certificats et homologues - certificaciones y homologación

- EN 16139
- EN 1022
- EN 1728

• Articolo conforme ai CAM

• Omologa Ministeriale classe 1 IM nella versione in poliuretano espanso flessibile ignifugo e tessuto Chili, tessuto Mirage o similpelle Secret e rete ignifuga Teddy

• Item compliant with CAM

• Class 1IM Italian Ministerial approval in the fire-retardant flexible polyurethane foam and Chili fabric, Mirage fabric or Secret simil leather and Teddy fire retardant mesh

• Article conforme aux CAM

• Homologation Ministérielle Italienne Classe 1IM dans la version en mousse de polyuréthane flexible ignifuge et tissu Chili, tissu Mirage ou simil cuir Secret et résille ignifuge Teddy

• Artículo conforme a los CAM

• Homologa Ministerial clase 1 IM en versión espuma de poliuretano flexible ignifugo et tejido Chili, tejido Mirage o ecopiel Secret y rete ignifuga Teddy

GARANZIA - guarantee - garantie - garantía

5 anni - 5 years - 5 ans - 5 años

MECCANISMI- mechanism - mécanismes - mecanismos

• **FX 03/** Piastra fissa

• **FX 03/** Fixed plate

• **FX 03/** Platine fixe

• **FX 03/** Placa fija

BASI - bases - piètements - bases

5 razze/ alluminio

- lucido
- verniciato nero

4 gambe/ metallo

- cromato
- verniciato nero

slitta/ metallo

- cromato
- nero

5 stars/ aluminium

- polished
- black painted

4 legs/ metal

- chromed
- black painted

cantilever/ metal

- chromed
- black

5 branches/ aluminium

- poli
- finition noir

4 pieds/ aluminium

- chromé
- finition noir

piètement luge/ métal

- chromé
- noir

5 radios/ aluminio

- pulido
- pintado negro

4 radios/ aluminio

- cromado
- pintado negro

cantilever

- cromado
- negro

OPTIONAL

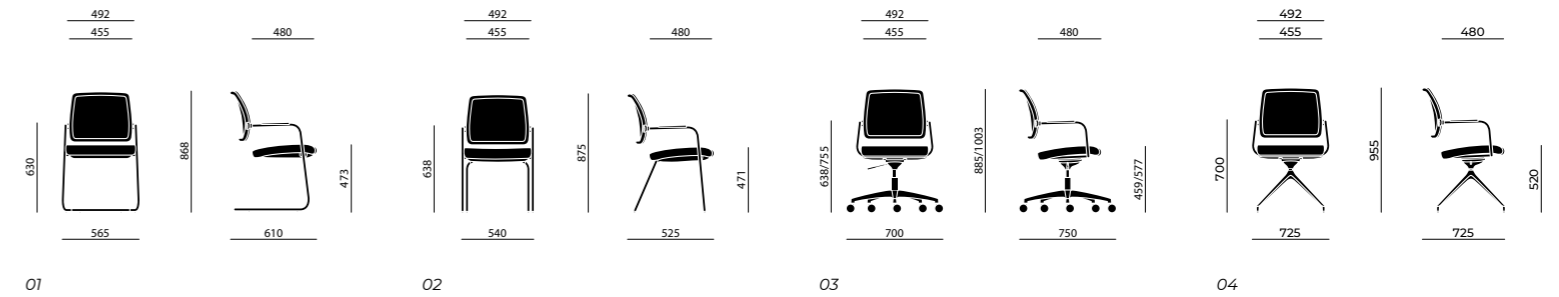
- **FR/** Poliuretano espanso ignifugo
- **RTC/** Rete ignifuga Teddy colorata

- **FR/** Fire retardant polyurethane foam
- **RTC/** Colored Teddy fire retardant mesh

- **FR/** Polyuréthane expansé ignifuge
- **RTC/** Résille ignifuge Teddy couleur

- **FR/** Espuma de poliuretano flexible ignifuga
- **RTC/** Rete ignifuga Teddy colorida

MISURE - size - dimensions - medidas



Kos White Air



DESCRIZIONE - description - description - descripción

IT

Kos White Air è una collezione di sedute per ospiti e attesa. È costituita da uno schienale in poliammide in colore bianco e rete autoportante ignifuga. Il sedile è realizzato in polipropilene bianco con struttura interna in multistrati di legno e imbottitura in poliuretano espanso flessibile.

Sono collegati reciprocamente da una struttura in tubolare di acciaio con pad in polipropilene che costituisce il bracciolo. La base è proposta in quattro versioni: a slitta, a quattro gambe, quattro razze piramidale e girevole a cinque ruote piroettanti frenate. I tubolari in acciaio sono proposti in finitura cromata con piedini in polipropilene.

EN

Kos White Air is a collection of guest and waiting chairs. It consists of a white polyamide backrest and fire retardant self-supporting mesh. The seat is made of white polypropylene with an inner structure of multi-layer wood and flexible polyurethane foam padding.

They are connected to each other by a tubular steel frame with a polypropylene pad that forms the armrest. The base is offered in four versions: cantilever, four-leg base, four-star pyramid base and five-star swivel base in die-cast aluminium with braked swivel castors. The steel tubulars are offered in a chromed or black painted finish with polypropylene feet.

FR

Kos White Air est une collection de chaises d'accueil et d'attente. Elle se compose d'un dossier en polyamide blanc et d'une résille autoportante ignifugée. L'assise est en polypropylène blanc avec une structure intérieure en multiples de bois et rembourrage en mousse de polyuréthane flexible. Ils sont reliés entre eux par une structure tubulaire en acier avec un coussin en polypropylène qui forme l'accoudoir. Le piètement est proposé en quatre versions: piètement-luge, piètement à quatre pieds, piètement pyramidal à quatre pieds et piètement pivotant à cinq branches en aluminium moulé sous pression poli avec roulettes pivotantes freinées. Les tubes en acier sont proposés en finition chromée avec des pieds en polypropylène.

ES

Kos White Air es una colección de sillas de espera y de huéspedes. Consta de respaldo de poliamida blanco y red autoportante ignifuga. El asiento es de polipropileno blanco con estructura interior de madera multicapa. Están unidos entre sí por un bastidor tubular de acero con una almohadilla de polipropileno que forma el reposabrazos. La base se ofrece en cuatro versiones: cantilever, base de cuatro patas, piramidal de cuatro patas y base giratoria de cinco radios de aluminio fundido a presión con ruedas giratorias con freno. Los tubulares de acero se ofrecen en acabado cromado con patas de polipropileno.

CERTIFICAZIONI E OMOLOGHE - certification and homologues - certificats et homologues - certificaciones y homologación

- EN 16139
- EN 1022
- EN 1728

• Articolo conforme ai CAM

• Omologa Ministeriale classe 1 IM nella versione in poliuretano espanso flessibile ignifugo e tessuto Chili, tessuto Mirage o similpelle Secret e rete ignifuga Teddy

• Item compliant with CAM

• Class 1IM Italian Ministerial approval in the fire-retardant flexible polyurethane foam and Chili fabric, Mirage fabric or Secret simil leather and Teddy fire retardant mesh

• Article conforme aux CAM

• Homologation Ministérielle Italienne Classe 1IM dans la version en mousse de polyuréthane flexible ignifuge et tissu Chili, tissu Mirage ou simil cuir Secret et résille ignifuge Teddy

• Artículo conforme a los CAM

• Homologa Ministerial clase 1 IM en versión espuma de poliuretano flexible ignifugo et tejido Chili, tejido Mirage o ecopiel Secret y rete ignifuga Teddy

GARANZIA - guarantee - garantie - garantía

5 anni - 5 years - 5 ans - 5 años

MECCANISMI- mechanism - mécanismes - mecanismos

• **FX 03/** Piastra fissa

• **FX 03/** Fixed plate

• **FX 03/** Platine fixe

• **FX 03/** Placa fija

BASI - bases - piètements - bases

5 razze/ alluminio

- lucido

4 gambe/ metallo

- cromato

slitta/ metallo

- cromato

5 stars/ aluminium

- polished

4 legs/ metal

- chromed

cantilever/ metal

- chromed

5 branches/ aluminium

- poli

4 pieds/ aluminium

- chromé

piètement luge/ métal

- chromé

5 radios/ aluminio

- pulido

4 radios/ aluminio

- cromado

cantilever

- cromado

OPTIONAL

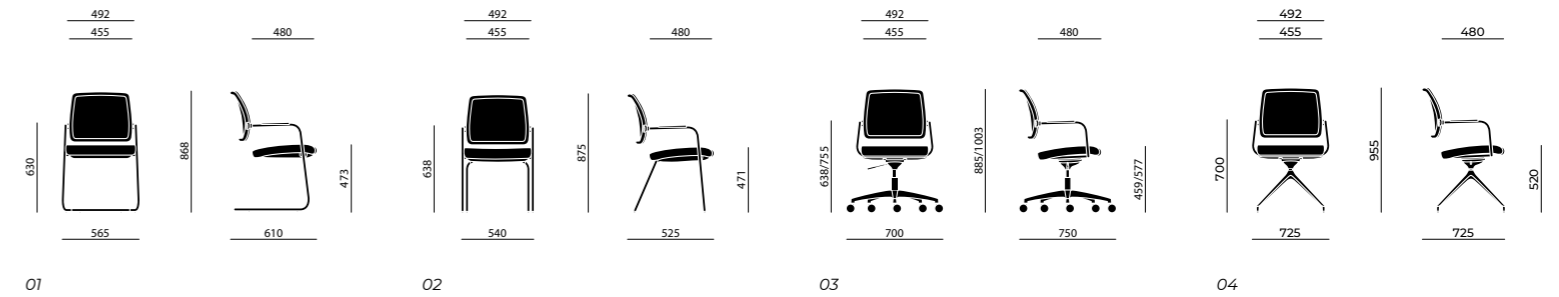
- **FR/** Poliuretano espanso ignifugo
- **RTC/** Rete ignifuga Teddy colorata

- **FR/** Fire retardant polyurethane foam
- **RTC/** Colored Teddy fire retardant mesh

- **FR/** Polyuréthane expansé ignifuge
- **RTC/** Résille ignifuge Teddy couleur

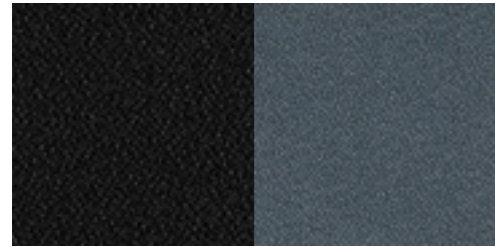
- **FR/** Espuma de poliuretano flexible ignifuga
- **RTC/** Rete ignifuga Teddy colorida

MISURE - size - dimensions - medidas



Teddy - Cat. B

100% Poliestere Fr
100% Polyester Fr
100% Polyester Fr
100% Polyester Fr



TY01
Nero
Black
Noir
Negro

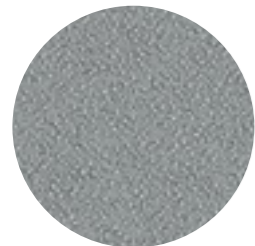
TY24
Grigio avio
Grey avio
Gris avio
Gris avio



TY22
Bordeaux
Bordeaux
Bordeaux
Bordeaux



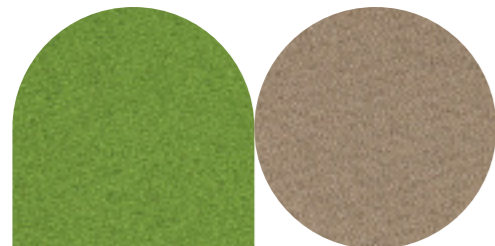
TY02
Rosso
Red
Rouge
Rojo



TY04
Grigio chiaro
Light grey
Gris clair
Gris claro



TY03
Blu
Blue
Bleu
Azul



TY05
Verde
Green
Vert
Verde

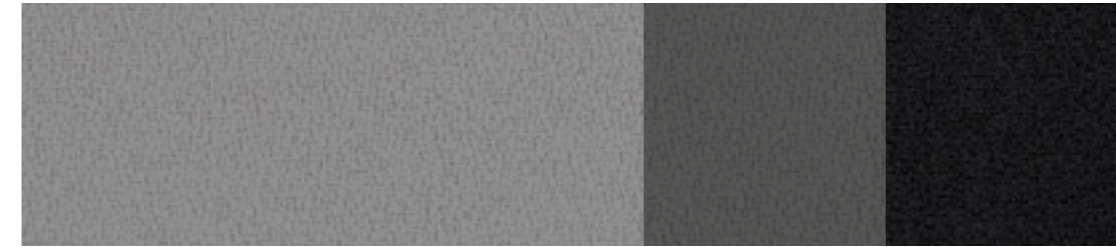
TY06
Terra
Earth
Terre
Tierra



TY23
Azzurro
Light blue
Blue ciel
Azul

Mirage - Cat. C

100% Poliestere Fr - Trevira CS®
100% Polyester Fr - Trevira CS®
100% Polyester Fr - Trevira CS®
100% Poliéster Fr - Trevira CS®



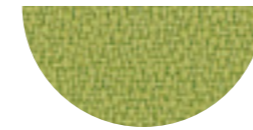
MG04
Grigio chiaro
Light grey
Gris clair
Gris claro

MG24
Grigio
Grey
Gris
Gris

MG01
Nero
Black
Noir
Negro



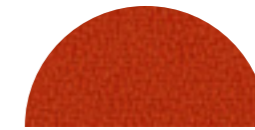
MG06
Marrone
Brown
Brun
Marrón



MG25
Verde chiaro
Light green
Vert clair
Verde claro



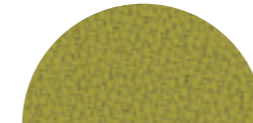
MG03
Blu
Blue
Bleu
Azul



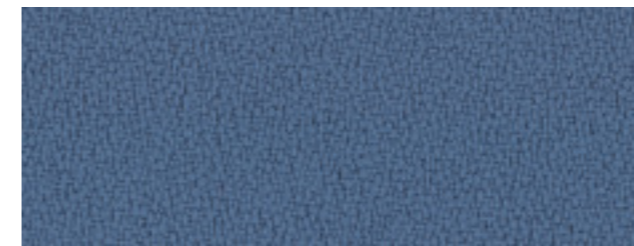
MG07
Arancio
Orange
Orange
Naranja



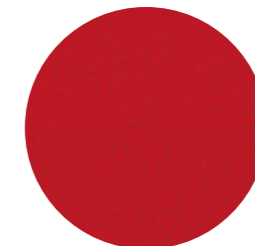
MG09
Beige
Beige
Beige
Beige



MG05
Verde
Green
Vert
Verde



MG33
Azzurro
Light blue
Blue ciel
Azul



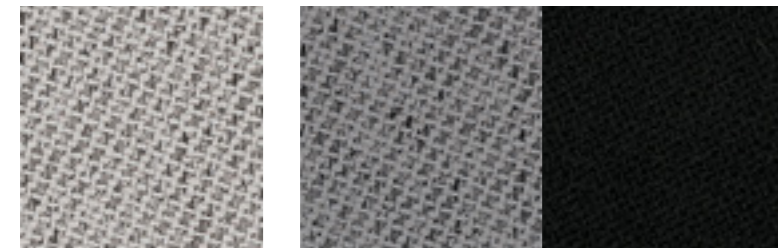
MG02
Rosso
Red
Rouge
Rojo



MG32
Bordeaux
Bordeaux
Bordeaux
Bordeaux

Chili - Cat. C

100% Poliestere riciclato post-consumo Fr
 100% Post consumer recycled polyester Fr
 100% Polyester recyclé post-consommation Fr
 100% Poliéster reciclado posconsumo Fr



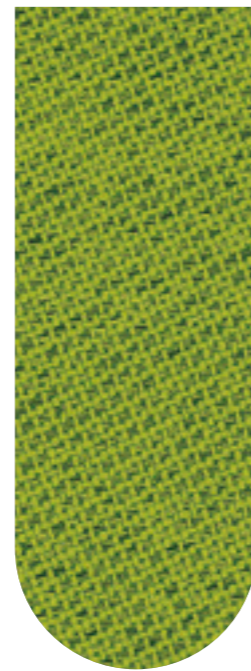
CL24
Grigio scuro
 Dark grey
 Gris foncé
 Gris oscuro

CL01
Nero
 Black
 Noir
 Negro

CL04
Grigio
 Grey
 Gris
 Gris

CL08
Ocra
 Ocher
 Ocre
 Ocre

CL25
Verde
 Green
 Vert
 Verde



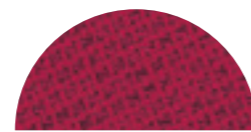
CL05
Verde chiaro
 Light green
 Vert clair
 Verde claro



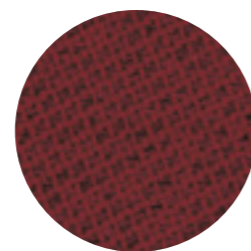
CL06
Marrone
 Brown
 Brun
 Marrón



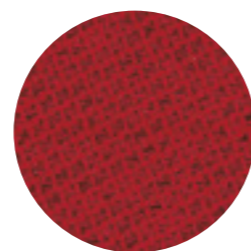
CL26
Marrone scuro
 Dark brown
 Brun foncé
 Marrón oscuro



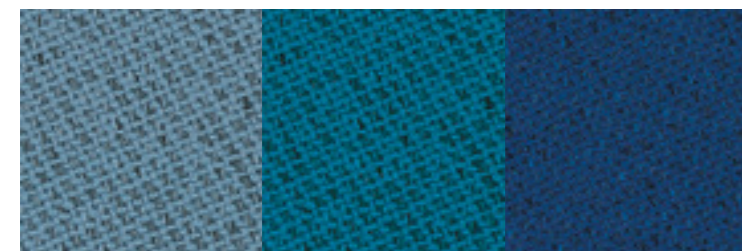
CL32
Amaranto
 Amaranth
 Amarante
 Amaranto



CL22
Bordeaux
 Bordeaux
 Bordeaux
 Bordeaux



CL02
Rosso
 Red
 Rouge
 Rojo



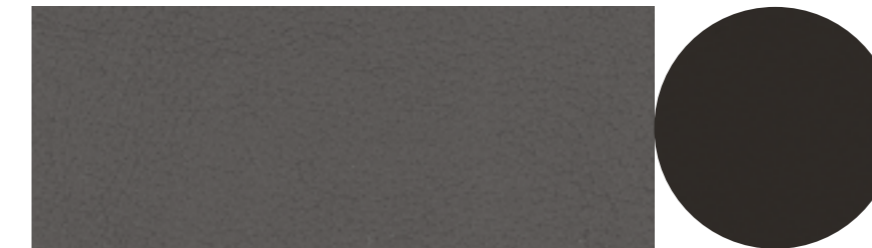
CL33
Azzurro
 Light blue
 Bleu ciel
 Azul

CL23
Turchese
 Turquoise
 Turquoise
 Turquesa

CL03
Blu
 Blue
 Bleu
 Azul

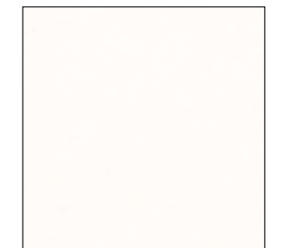
Secret - Cat. C

76% PVC - 22% PES - 2% PU



SC04
Grigio scuro
 Dark grey
 Gris foncé
 Gris oscuro

SC01
Nero
 Black
 Noir
 Negro



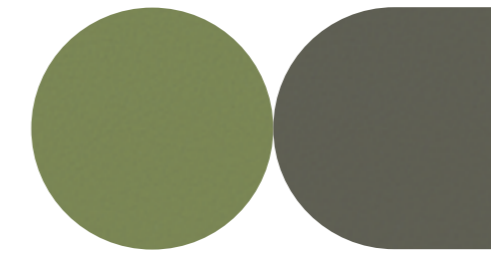
SC15
Bianco
 White
 Blanc
 Blanco



SC26
Marrone scuro
 Dark brown
 Brun foncé
 Marrón oscuro

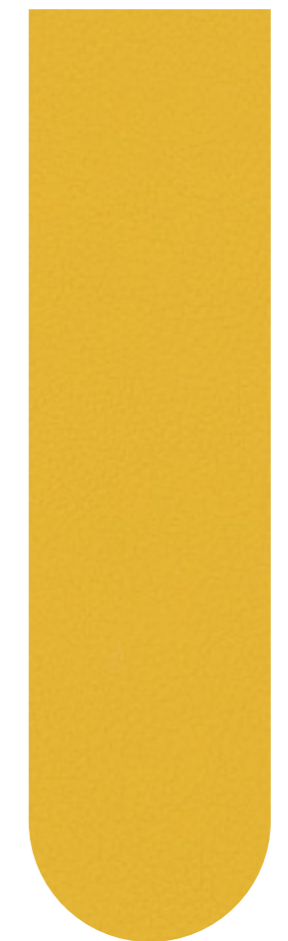


SC06
Marrone
 Brown
 Brun
 Marrón



SC05
Verde
 Green
 Vert
 Verde

SC25
Verde scuro
 Dark green
 Vert foncé
 Verde oscuro



SC08
Ocra
 Ocher
 Ocre
 Ocre



SC03
Blu
 Blue
 Bleu
 Azul

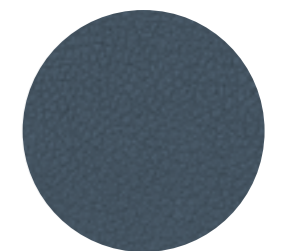


SC09
Beige
 Beige
 Beige
 Beige



SC22
Bordeaux
 Bordeaux
 Bordeaux
 Bordeaux

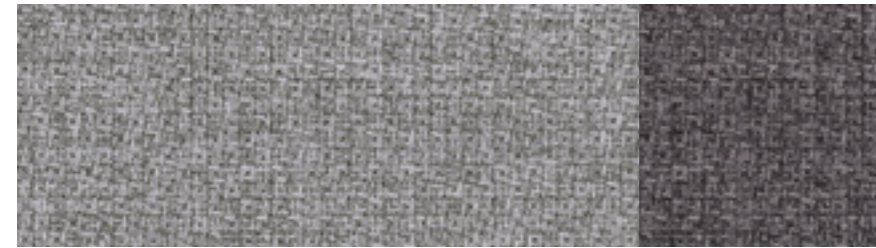
SC02
Rosso
 Red
 Rouge
 Rojo



SC23
Blu scuro
 Dark blue
 Bleu foncé
 Azul oscuro

Step Melange - Cat. E

100% Poliestere Fr - Trevira CS®
 100% Polyester Fr - Trevira CS®
 100% Polyester Fr - Trevira CS®
 100% Poliéster Fr - Trevira CS®

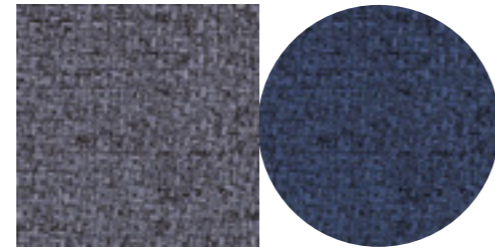


ST04

Grigio
 Grey
 Gris
 Gris

ST24

Grigio scuro
 Dark grey
 Gris foncé
 Gris oscuro



ST03

Blu
 Blue
 Bleu
 Azul

ST33

Blu scuro
 Dark blue
 Bleu foncé
 Azul oscuro



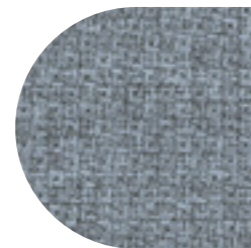
ST09

Tortora
 Grey beige
 Beige gris
 Taupe



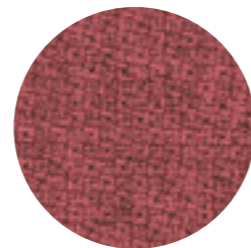
ST19

Beige
 Beige
 Beige
 Beige



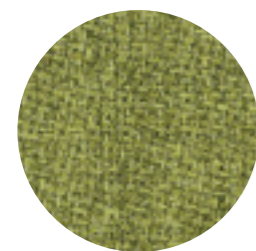
ST23

Turchese
 Turquoise
 Turquoise
 Azul turquesa



ST10

Salmone
 Salmon
 Saumoné
 Salmón



ST25

Verde chiaro
 Light green
 Vert clair
 Verde claro

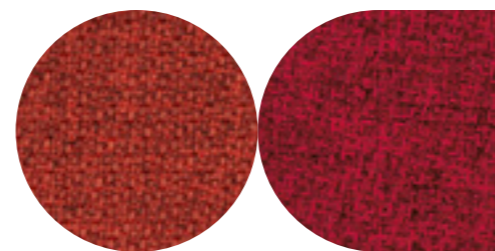


ST05

Verde
 Green
 Vert
 Verde

ST35

Verde scuro
 Dark green
 Vert foncé
 Verde oscuro



ST07

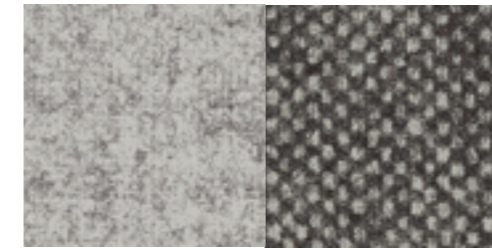
Arancione
 Orange
 Naranja
 Naranja

ST02

Rosso
 Red
 Rouge
 Rojo

Fenice - Cat. E

75% Lana - 25% Poliammide
 75% Wool - 25% Polyamide
 75% Laine - 25% Polyamide
 75% Lana - 25% Poliamida

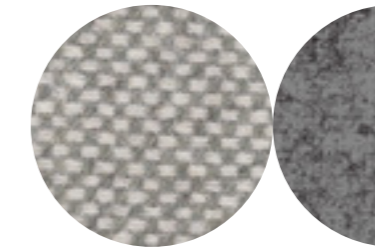


FE04

Grigio
 Grey
 Gris
 Gris

FS24

Grigio scuro
 Dark grey
 Gris foncé
 Grigio scuro

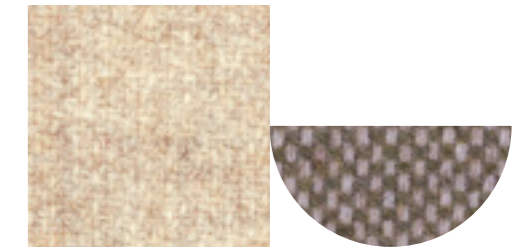


FS04

Grigio
 Grey
 Gris
 Gris

FE24

Grigio scuro
 Dark grey
 Gris foncé
 Gris oscuro



FE09

Beige
 Beige
 Beige
 Beige

FS06

Marrone
 Brown
 Brun
 Marrón



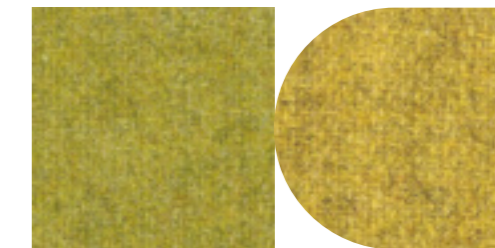
FE35

Verde scuro
 Dark green
 Vert foncé
 Verde oscuro



FS05

Verde
 Green
 Vert
 Verde

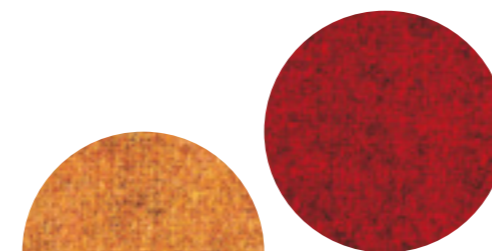


FE05

Verde
 Green
 Vert
 Verde

FE25

Verde chiaro
 Light green
 Vert clair
 Verde claro

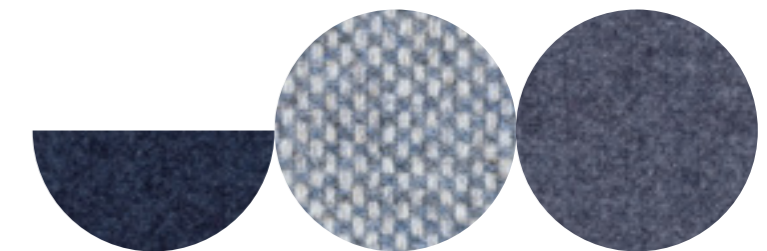


FE07

Arancio
 Orange
 Naranja
 Naranja

FE22

Rosso
 Red
 Rouge
 Rojo



FE03

Blu scuro
 Dark blue
 Bleu foncé
 Azul oscuro

FS03

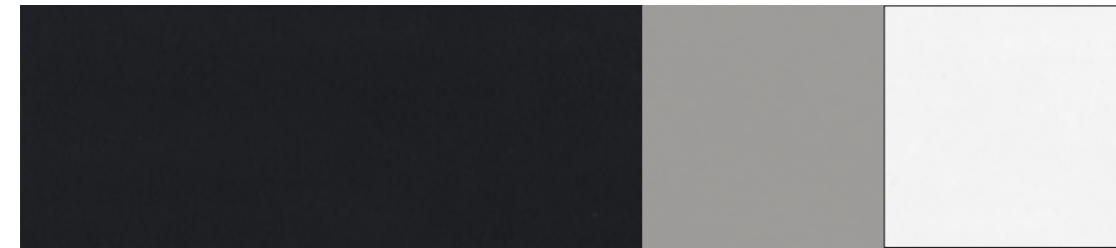
Blu
 Blue
 Bleu
 Azul

FE33

Blu
 Blue
 Bleu
 Azul

Extrema AU - Cat. F

63% PU- 23% COT- 8% PES



EX01

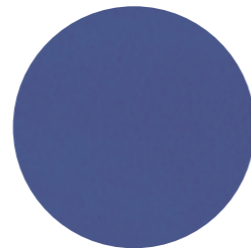
Nero
Black
Noir
Negro

EX04

Grigio scuro
Dark grey
Gris foncé
Gris oscuro

EX15

Bianco
White
Blanc
Blanco



EX03

Blu
Blue
Bleu
Azul



EX26

Marrone scuro
Dark brown
Brun foncé
Marrón oscuro



EX09

Beige
Beige
Beige
Beige



EX06

Tortora
Grey beige
Beige gris
Taupe

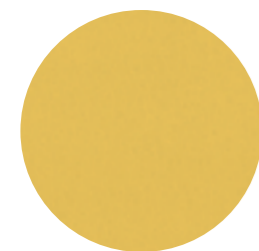


EX33

Carta zucchero
Powdre blue
Bleu poudre
Azul pastel

EX23

Blu scuro
Dark blue
Bleu foncé
Azul oscuro



EX08

Ocra
Ocher
Ocre
Ocre

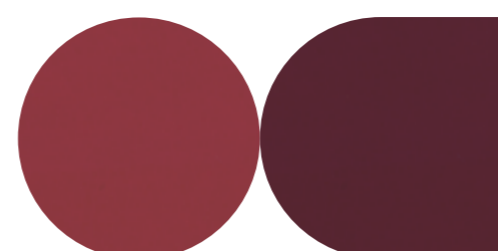


EX05

Verde oliva
Olive green
Vert olive
Verde oliva

EX25

Verde scuro
Dark green
Vert foncé
Verde oscuro



EX02

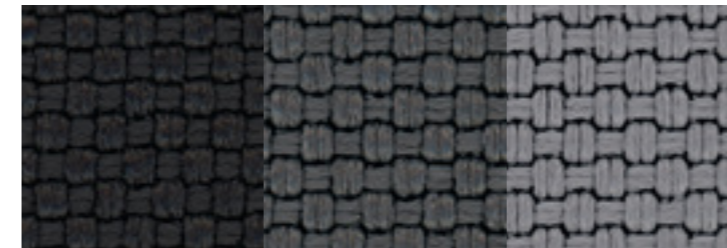
Rosso
Red
Rouge
Rojo

EX22

Bordeaux
Bordeaux
Bordeaux
Bordeaux

Nabucco - Cat. F

100% Poliestere Fr - Trevira CS®
100% Polyester Fr - Trevira CS®
100% Polyester Fr - Trevira CS®
100% Poliéster Fr - Trevira CS®



NA01

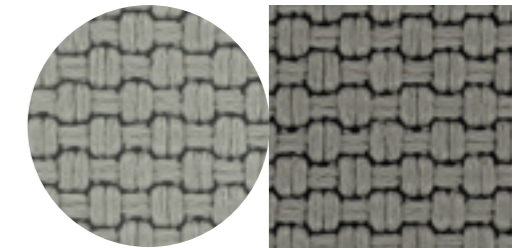
Antracite
Anthracite
Anthracite
Antracita

NA24

Grigio scuro
Dark grey
Gris foncé
Gris oscuro

NA04

Grigio chiaro
Light grey
Gris clair
Gris claro



NA09

Tortora
Grey beige
Beige gris
Taupe

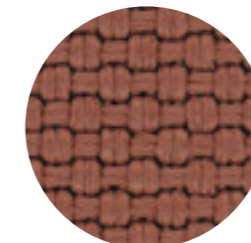
NA06

Beige
Beige
Beige
Beige



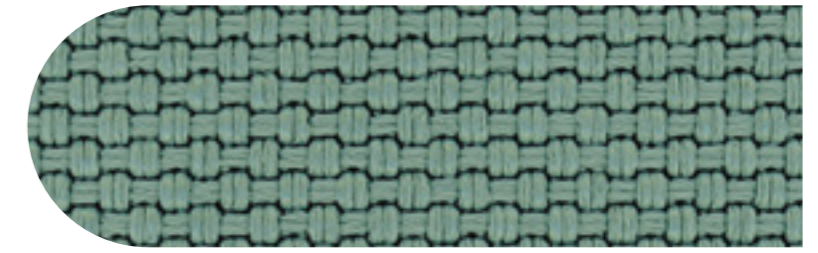
NA02

Rosso
Red
Rouge
Rojo



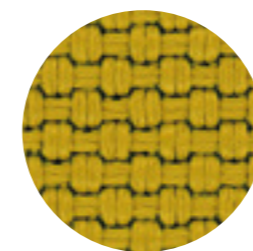
NA22

Salmone
Salmon
Saumoné
Salmón



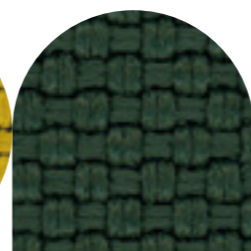
NA05

Verde chiaro
Light green
Vert clair
Verde claro



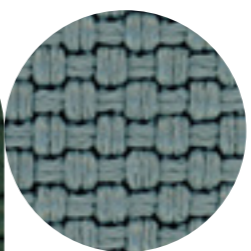
NA08

Ocra
Ocher
Ocre
Ocre



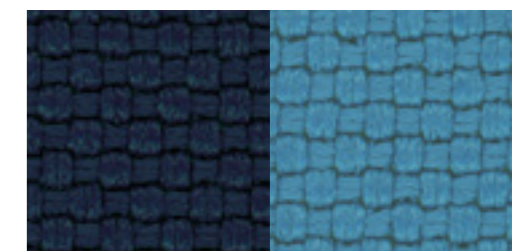
NA25

Verde scuro
Dark green
Vert foncé
Verde oscuro



NA33

Azzurro
Light blue
Bleu ciel
Azul



NA03

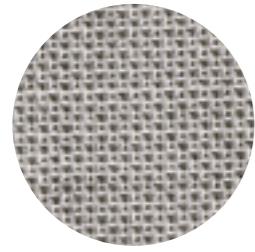
Blu scuro
Dark blue
Bleu foncé
Azul oscuro

NA23

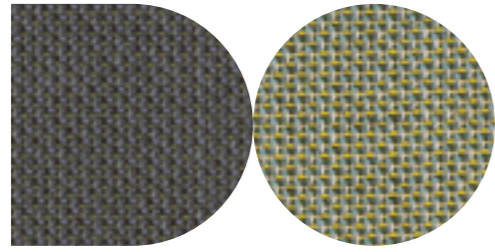
Turchese
Turquoise
Turquoise
Azul turquesa

Morph - Cat. G

85% Lana della Nuova Zelanda - 15% Poliammide
85% Wools of New Zealand - 15% Polyamide
85% Laine de Nouvelle Zélande - 15% Polyamide
85% Lana de Nueva Zelanda - 15% Poliamida

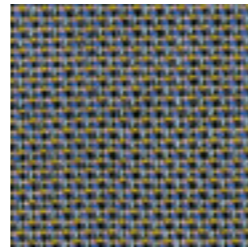


MO04
Grigio
Grey
Gris
Gris



MO24
Antracite
Anthracite
Antracite
Antracita

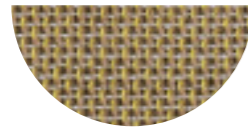
MO25
Verde oliva
Olive green
Vert olive
Verde oliva



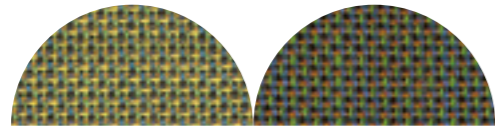
MO03
Blu
Blue
Bleu
Azul



MO09
Beige
Beige
Beige
Beige

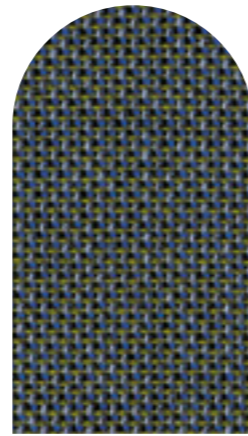


MO06
Nocciola
Hazel
Noisette
Avellana

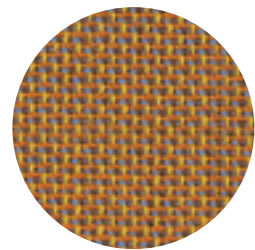


MO05
Verde
Green
Vert
Verde

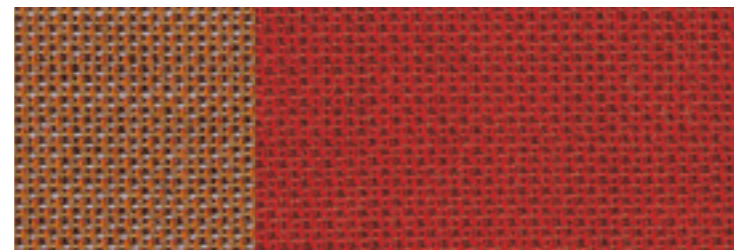
MO35
Verde scuro
Dark green
Vert foncé
Verde oscuro



MO23
Blu scuro
Dark blue
Bleu foncé
Azul oscuro



MO08
Giallo
Yellow
Jaune
Amarillo



MO07
Arancio
Orange
Rouge
Naranja

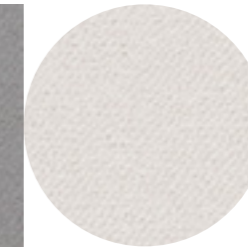
MO02
Rosso
Red
Rouge
Rojo

Gorgeous - Cat. G

100% PES Fr
100% PES Fr
100% PES Fr
100% PES Fr



GG04
Grigio
Grey
Gris
Gris



GG24
Grigio chiaro
Light grey
Gris clair
Gris claro



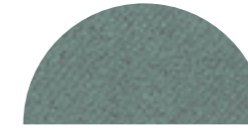
GG09
Beige
Beige
Beige
Beige



GG26
Tortora
Grey beige
Beige gris
Taupe



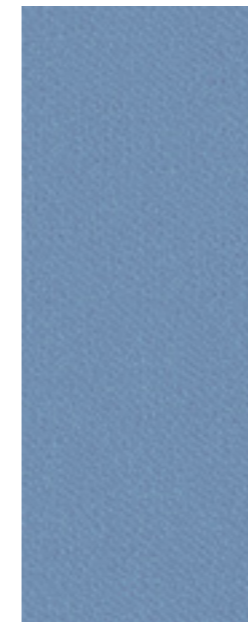
GG01
Nero
Black
Noir
Negro



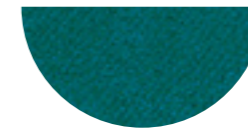
GG05
Verde
Green
Vert
Verde



GG06
Marrone
Brown
Brun
Marrón



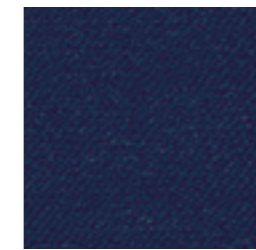
GG03
Azzurro
Light blue
Bleu ciel
Azul



GG25
Turchese
Turquoise
Turquoise
Azul turquesa



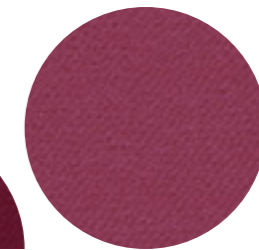
GG35
Petrolio
Petrol
Pétrole
Petróleo



GG23
Blu
Blue
Bleu
Azul



GG22
Amaranto
Amaranth
Amarante
Amaranto



GG20
Petunia
Petunia
Pétunia
Petunia



GG10
Rosa antico
Antique rose
Rose antique
Rosa palo

Pelle fiore rettificato - Cat. PF

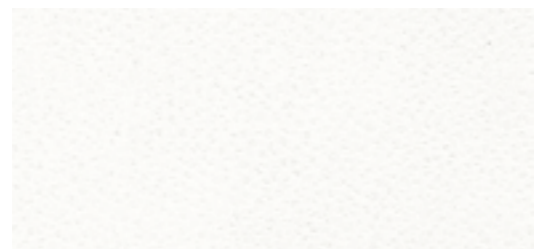
Corrected grain leather
Cuir grain corrigé
Cuero grano corregido



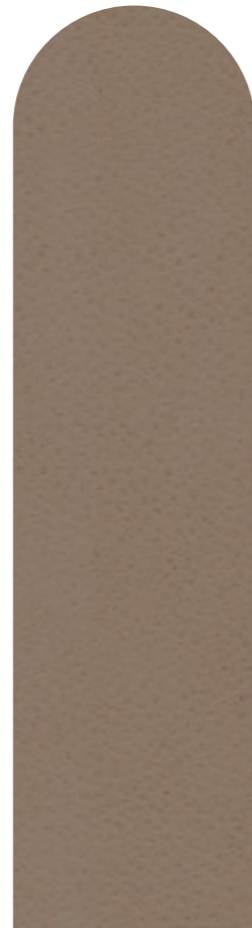
PF04
Grigio scuro
Dark grey
Gris foncé
Gris oscuro



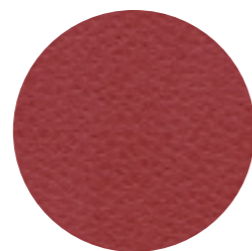
PF01
Nero
Black
Noir
Negro



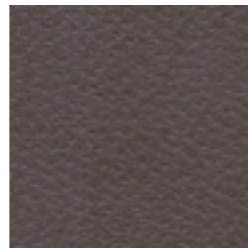
PF15
Bianco
White
Blanc
Blanco



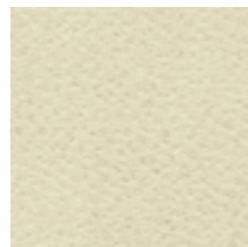
PF06
Marrone
Brown
Brun
Marrón



PF02
Rosso
Red
Rouge
Rojo



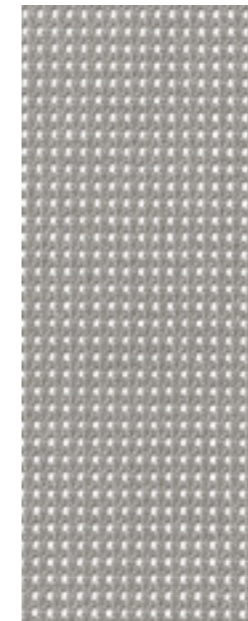
PF26
Marrone scuro
Dark brown
Brun foncé
Marrón oscuro



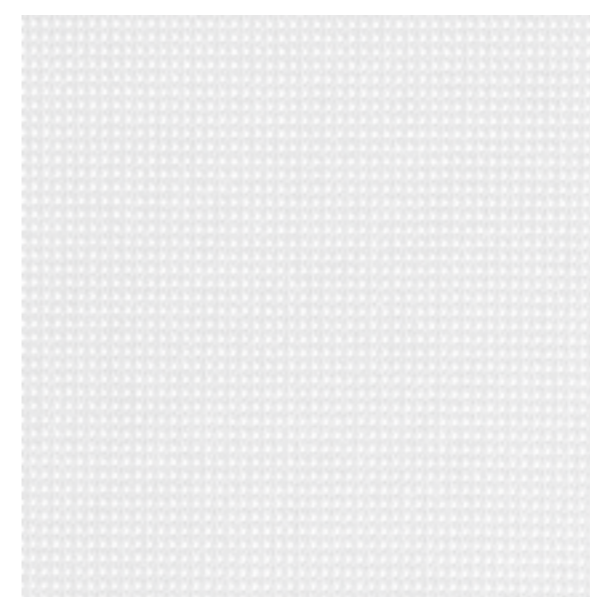
PF09
Beige
Beige
Beige
Beige

Rete Teddy

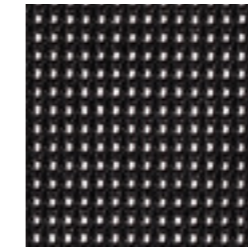
100% Poliestere Fr
100% Polyester Fr
100% Polyester Fr
100% Poliéster Fr



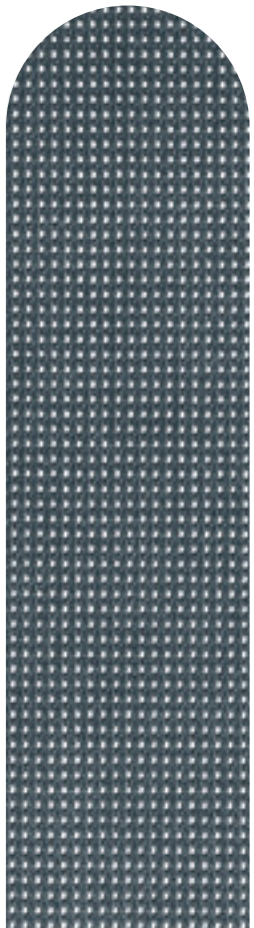
RY24
Grigio chiaro
Light grey
Gris clair
Gris claro



RY15
Bianco
White
Blanc
Blanco

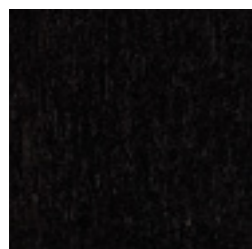


RY01
Nero
Black
Noir
Negro



RY04
Grigio avio
Grey avio
Gris avio
Gris avio

Legni/Woods/Bois/Maderas



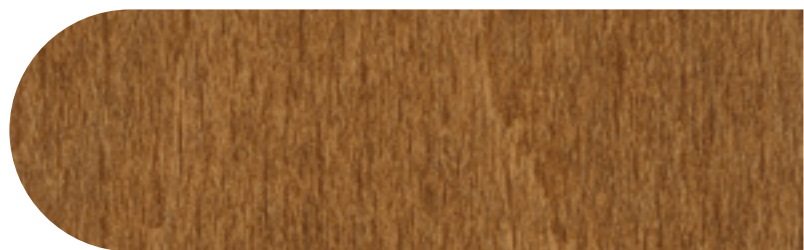
WABEBK

Faggio verniciato nero
Walnut stained beech
Hêtre finition noir
Haya pintado negro



WABENA

Faggio naturale
Natural beech
Hêtre naturel
Haya natural



WABEWN

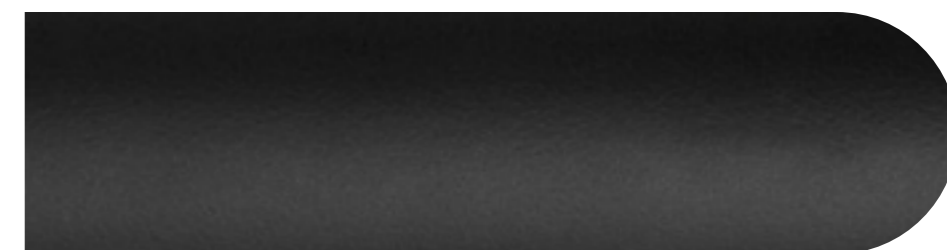
Faggio tinto noce
Walnut stained beech
Hêtre teinté noyer
Haya teñido nogal

Metalli/Metals/Métaux/Metales



MTLCR

Cromo
Chrome
Chromé
Cromo



MTLBK

Nero opaco
Matt black
Noir mat
Negro mate

nahu®

Diritti riservati.
La riproduzione anche parziale è consentita solo previa autorizzazione scritta di Linea Fabbrica Srl

All rights reserved.
No parts of this catalogue may be reproduced without permission in writing form by Linea Fabbrica Srl

Tous droits réservés.
Toute reproduction totale ou partielle est interdite, sans autorisation écrite préalable de Linea Fabbrica Srl

Reservados todos los derechos.
La reproducción, total o parcial, está permitida solo con la autorización por escrito de Linea Fabbrica Srl

A.D./
Arch. Paolo Pampanoni

Concept and Graphic/
d+a

Photos/
Ikon
Aztec SNC

Stylist/
Claudia Sani

Printing/
Tipolito Properzio-Le Stampe di Alice

Binding/
Legatoria Umbra

E.D./
Jan. 2024



Linea Fabbrica Srl
company certified

UNI EN ISO 9001:2015/
Certificate nr. 50 100 14238
Rev.002

UNI EN ISO 14001:2015/
Certificate nr. 50 100 14243
Rev. 002

UNI EN ISO 45001:2018/
Certificate nr. 50 100 14970
Rev. 002



FSC® C126158
marchio della
gestione forestale
responsabile

Linea Fabbrica srl
company certified FSC®

Via Thonet, 5
33044 Manzano (UD)
Tel: +39. 0432 747111
Fax: +39. 0432 747199
info@nahu.it
www.nahu.it

nahu