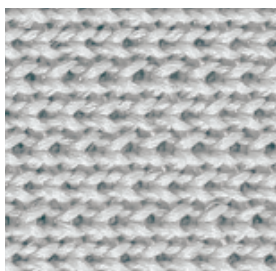
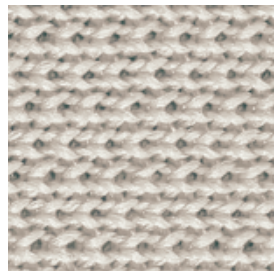


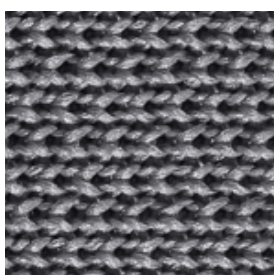
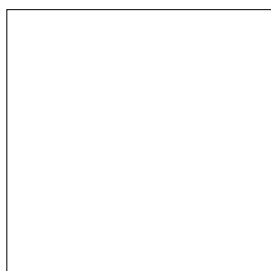
Re-Feel 3D fabric



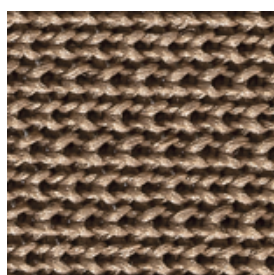
RF24
Grigio chiaro
Light grey
Gris clair
Gris claro



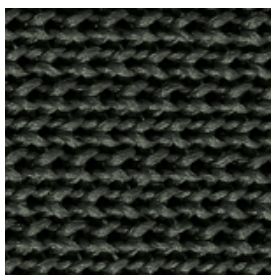
RF09
Beige
Beige
Beige
Beige



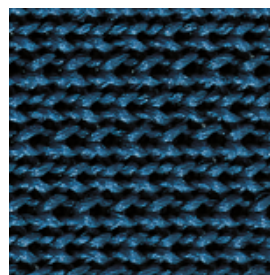
RF04
Grigio scuro
Dark grey
Gris foncé
Gris oscuro



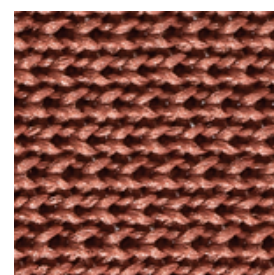
RF06
Terra
Earth
Terre
Tierra



RF05
Verde scuro
Dark green
Vert foncé
Verde oscuro



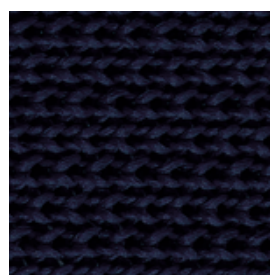
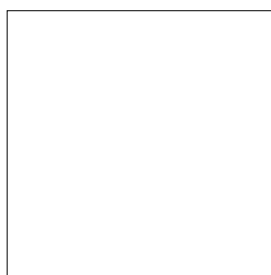
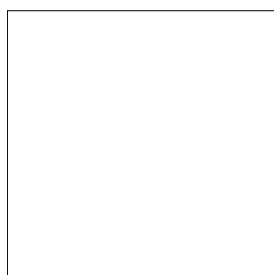
RF23
Blu
Blue
Bleu
Azul



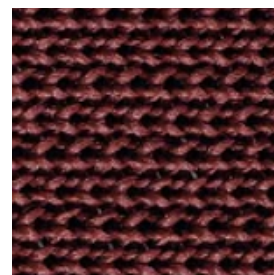
RF02
Rosso mattone
Brick red
Rouge brique
Rojo ladrillo



RF01
Nero
Black
Noir
Negro



RF03
Blu scuro
Dark blue
Bleu foncé
Azul oscuro



RF22
Bordeaux
Bordeaux
Bordeaux
Bordeaux

COMPOSIZIONE - composition - composition - composición

IT	EN	FR	ES
100% Poliestere FR riciclato postconsumo	100% Post-consumer recycled FR polyester	100% Polyester FR recyclé post-consommation	100% Poliéster FR reciclado postconsumo

PESO - weight - poids - peso

671 g/ml ± 5%

ABRASIONE -abrasion - abrasion - abrasión

IT	EN	FR	ES
150.000 cicli ± 10% (Martindale)	150.000 cycles ± 10% (Martindale)	150.000 tours ± 10% (Martindale)	150.000 ciclos ± 10% (Martindale)

SOLIDITÀ ALLA LUCE - light fastness - solidité à la lumière - resistencia a la luz

4-5 (Xenotest)

RESISTENZA AL FUOCO - fire resistance - résistance au feu - resistencia al fuego

• I CLASSE 1 IM (UNI 9175)

COLORE- colour - coloris - color

IT	EN	FR	ES
Leggere differenze di colore fra una partita e l'altra sono da considerarsi normali. Leggeri scostamenti non verranno accettati come reclamo. I colori chiari non devono essere messi a contatto con tessuti e capi d'abbigliamento trattati con coloranti non fissati o con scarse solidità di tintura, onde evitare macchie ed aloni di coloranti di cui non possiamo garantire la pulitura.	Slight color differences between one lot and another have to be considered within commercial tolerance.Slight differences will not be accepted as a complaint. To avoid permanent stain, the lighter colours of the article should not be brought into contact with textiles and clothing coloured with unfixed dyes. We cannot guarantee the ability to remove unknown dyes from light coloured product.	Légères différences de couleur entre un lot et l'autre doivent être considérés comme étant normales. Légères différences ne seront pas acceptées comme réclamation. Les couleurs claires ne doivent pas entrer en contact avec de tissus et vêtements traités avec de colorants mal fixés ou avec de pigments peu solides, pour éviter taches et halos de colorant pour lesquels nous ne pouvons pas garantir le nettoyage.	Las diferencias leves de color entre un lote y el otro deben considerarse normales. Las variaciones leves no se aceptarán como reclamo. Los colores claros no deben ponerse en contacto con telas y prendas tratadas con colorantes no fijados o con escasa solidez de tintura, a los fines de evitar manchar y dejar marcas de colorantes, de las cuales no podemos garantizar la remoción.

PULIZIA E MANUTENZIONE - cleaning and maintenance - nettoyage et maintenance - limpieza y mantenimiento

IT	EN	FR	ES
Usare con regolarità l'aspirapolvere. Non spazzolare. Non utilizzare materiali abrasivi.	Use the vacuum cleaner regularly. Do not brush. Do not use the abrasive materials.	Utiliser l'aspirateur régulièrement. Ne pas brosser. Ne pas utiliser de matériaux abrasifs.	Usar regularmente la aspiradora. No cepillar. No utilizar materiales abrasivos.