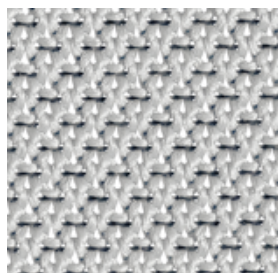
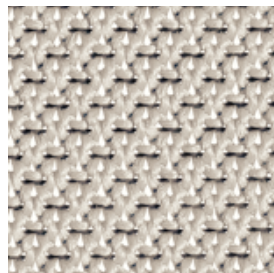


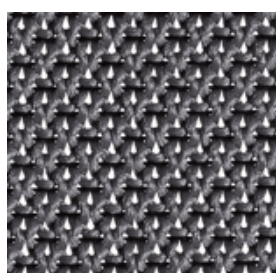
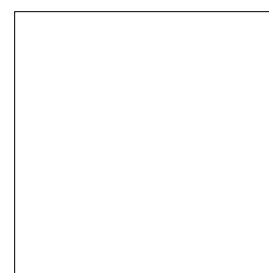
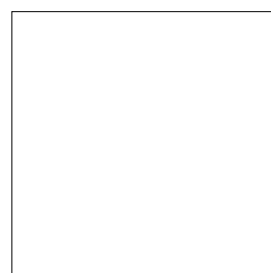
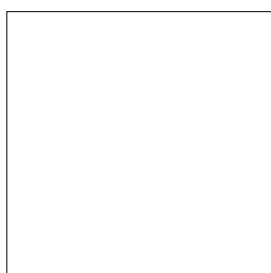
Re-Feel Knitted mesh



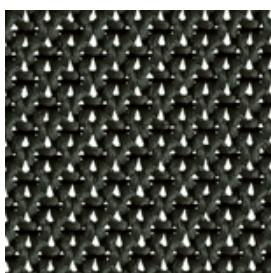
RR24
Grigio chiaro
Light grey
Gris clair
Gris claro



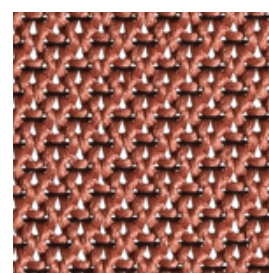
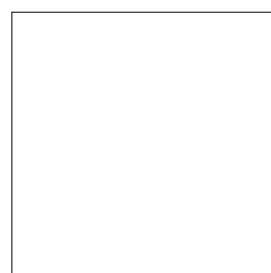
RR09
Beige
Beige
Beige
Beige



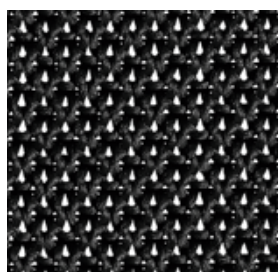
RR04
Grigio scuro
Dark grey
Gris foncé
Gris oscuro



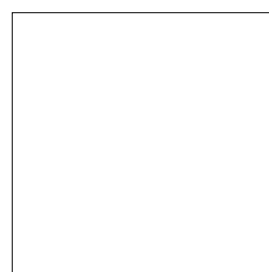
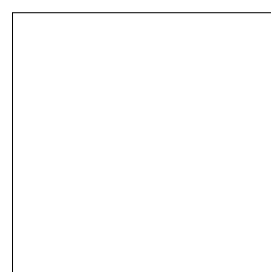
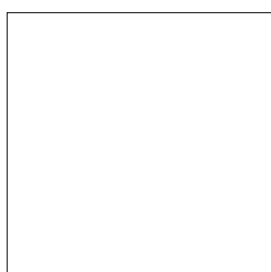
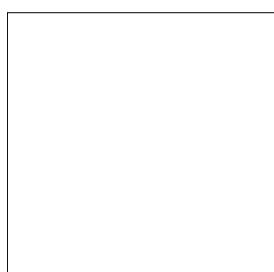
RR05
Verde scuro
Dark green
Vert foncé
Verde oscuro



RR02
Rosso mattone
Brick red
Rouge brique
Rojo ladrillo



RR01
Nero
Black
Noir
Negro



COMPOSIZIONE - composition - composition - composición

IT	EN	FR	ES
85% Poliestere FR riciclato postconsumo - 15% elastomero	85% post-consumer recycled FR polyester – 15% elastomer	85 % polyester FR recyclé post-consommation – 15 % élastomère	85 % poliéster FR reciclado posconsumo – 15 % elastómero

PESO - weight - poids - peso

370 g/ml ± 5%

ABRASIONE -abrasion - abrasion - abrasión

IT	EN	FR	ES
150.000 cicli ± 10% (Martindale)	150.000 cycles ± 10% (Martindale)	150.000 tours ± 10% (Martindale)	150.000 ciclos ± 10% (Martindale)

SOLIDITÀ ALLA LUCE - light fastness - solidité à la lumière - resistencia a la luz

4-5 (Xenotest)

RESISTENZA AL FUOCO - fire resistance - résistance au feu - resistencia al fuego

• I CLASSE 1 IM (UNI 9175)

COLORE- colour - coloris - color

IT	EN	FR	ES
Leggere differenze di colore fra una partita e l'altra sono da considerarsi normali. Leggeri scostamenti non verranno accettati come reclamo. I colori chiari non devono essere messi a contatto con tessuti e capi d'abbigliamento trattati con coloranti non fissati o con scarse solidità di tintura, onde evitare macchie ed aloni di coloranti di cui non possiamo garantire la pulitura.	Slight color differences between one lot and another have to be considered within commercial tolerance.Slight differences will not be accepted as a complaint. To avoid permanent stain, the lighter colours of the article should not be brought into contact with textiles and clothing coloured with unfixed dyes. We cannot guarantee the ability to remove unknown dyes from light coloured product.	Légères différences de couleur entre un lot et l'autre doivent être considérés comme étant normales. Légères différences ne seront pas acceptées comme réclamation. Les couleurs claires ne doivent pas entrer en contact avec de tissus et vêtements traités avec de colorants mal fixés ou avec de pigments peu solides, pour éviter taches et halos de colorant pour lesquels nous ne pouvons pas garantir le nettoyage.	Las diferencias leves de color entre un lote y el otro deben considerarse normales. Las variaciones leves no se aceptarán como reclamo. Los colores claros no deben ponerse en contacto con telas y prendas tratadas con colorantes no fijados o con escasa solidez de tintura, a los fines de evitar manchar y dejar marcas de colorantes, de las cuales no podemos garantizar la remoción.

PULIZIA E MANUTENZIONE - cleaning and maintenance - nettoyage et maintenance - limpieza y mantenimiento

IT	EN	FR	ES
Usare con regolarità l'aspirapolvere. Non spazzolare. Non utilizzare materiali abrasivi.	Use the vacuum cleaner regularly. Do not brush. Do not use the abrasive materials.	Utiliser l'aspirateur régulièrement. Ne pas brosser. Ne pas utiliser de matériaux abrasifs.	Usar regularmente la aspiradora. No cepillar. No utilizar materiales abrasivos.